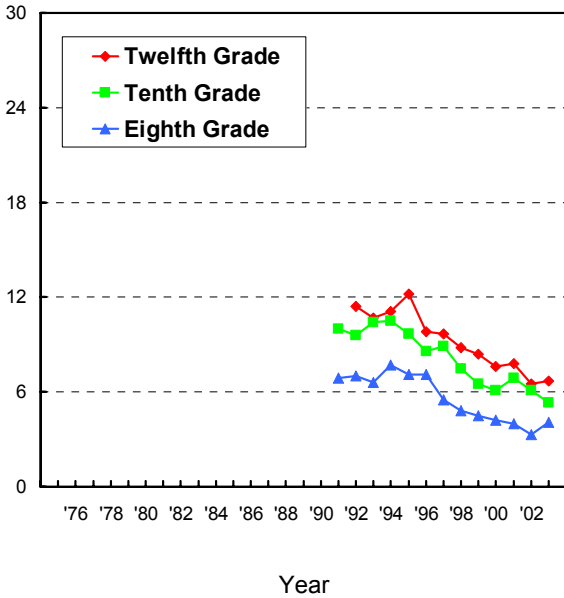


**FIGURE 2**  
**Smokeless Tobacco: Trends in 30-Day Use, Risk, Disapproval,**  
**and Availability**  
 Eighth, Tenth, and Twelfth Graders

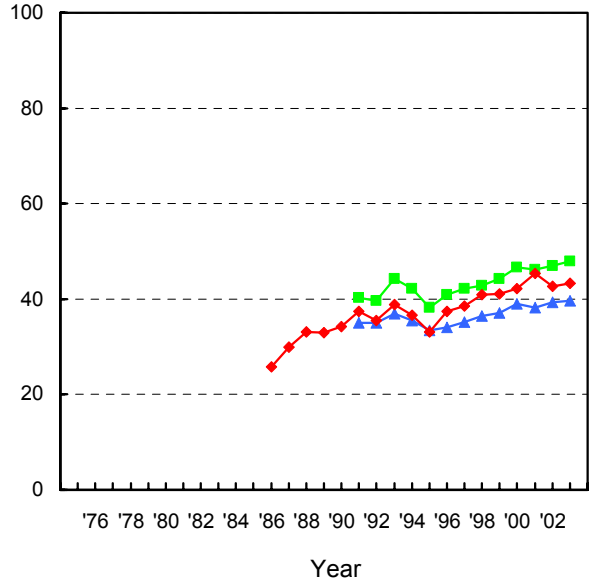
**Use**

% who used in past 30 days



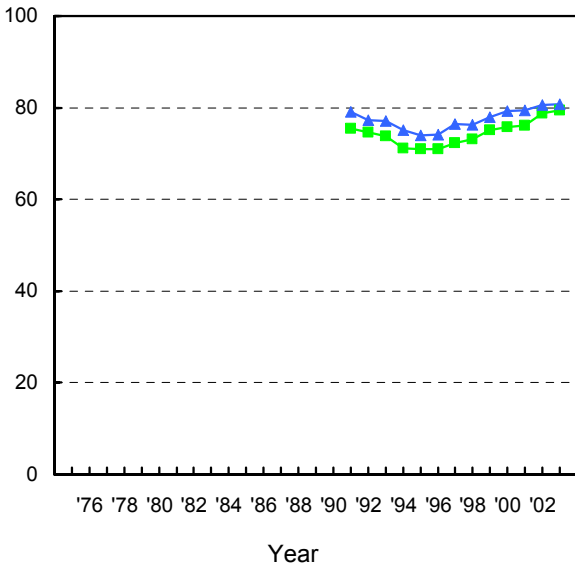
**Risk**

% seeing "great risk" in using regularly



**Disapproval**

% disapproving of using regularly



**Availability**

% saying "fairly easy" or "very easy" to get

